

LPS SERIES-Solar Power

LPS12-230 (12V230AH)

Specification

Nominal Voltage	12V	
Nominal Capacity(100HR)	230.0AH	
Dimension	Length	522±3mm (20.55 inches)
	Width	240±3mm (9.45 inches)
	Container Height	218±3mm (8.58 inches)
	Total Height (with Terminal)	224±3mm (8.81 inches)
Approx Weight	Approx 65.0 Kg (143.3 lbs)	
Terminal	T11	
Container Material	ABS	
Rated Capacity	230.0 AH/2.30A	(100hr, 1.80V/cell, 25°C/77°F)
	210.0 AH/10.5A	(20hr, 1.80V/cell, 25°C/77°F)
	200.0 AH/20.0A	(10hr, 1.80V/cell, 25°C/77°F)
	174.5 AH/34.9A	(5hr, 1.75V/cell, 25°C/77°F)
	121.5 AH/121.5A	(1hr, 1.60V/cell, 25°C/77°F)
Max. Discharge Current	2000A (5s)	
Internal Resistance	Approx 2.7mΩ	
Operating Temp. Range	Discharge	-15~50°C (5~122°F)
	Charge	0~40°C (32~104°F)
	Storage	-15~40°C (5~104°F)
Nominal Operating Temp. Range	25±3°C (77±5°F)	
Cycle Use	Initial Charging Current less than 60.0A. Voltage	
	14.4V~15.0V at 25°C(77°F)Temp. Coefficient -30mV/°C	
Standby Use	No limit on Initial Charging Current Voltage	
	13.5V~13.8V at 25°C(77°F)Temp. Coefficient -20mV/°C	
Capacity affected by Temperature	40°C (104°F)	103%
	25°C (77°F)	100%
	0°C (32°F)	86%
Self Discharge	Leoch LPS series batteries may be stored for up to 6 months at 25°C(77°F) and then a freshening charge is required. For higher temperatures the time interval will be shorter.	



Applications

- ◆ Green energy systems (solar, wind, hydro, etc)
- ◆ Solar power stations
- ◆ Telecommunications installations
- ◆ Measurement stations
- ◆ Pump systems
- ◆ Signal station
- ◆ Survey and Mapping system
- ◆ Emergency lighting
- ◆ Railway crossing
- ◆ Traffic lights
- ◆ Street lightening
- ◆ Lawn lamp
- ◆ Street signs
- ◆ SOS pillars
- ◆ Alarm installations
- ◆ Weekend cottage camping
- ◆ Caravans
- ◆ Boats or buoys



Constant Current Discharge (Amperes) at 25 °C (77°F)

F.V/Time	15min	20min	30min	45min	1h	2h	3h	4h	5h	8h	10h	20h	48h	100h
1.85V/cell	227.5	189.0	146.8	116.3	94.1	61.3	46.3	37.9	32.0	22.4	19.2	10.2	4.58	2.25
1.80V/cell	252.2	207.9	158.4	123.5	99.2	65.2	48.8	39.7	33.6	23.5	20.0	10.5	4.65	2.30
1.75V/cell	279.8	227.7	170.4	132.0	107.0	68.3	51.5	41.5	34.9	24.2	20.4	10.7	4.73	2.32
1.70V/cell	305.7	248.7	187.2	137.9	113.0	72.0	54.0	43.2	36.3	25.1	21.1	10.9	4.78	2.35
1.65V/cell	323.7	262.5	197.2	146.4	116.9	74.5	56.0	44.7	37.6	25.7	21.5	11.2	4.87	2.39
1.60V/cell	354.8	285.0	209.6	151.7	121.5	77.6	57.9	46.1	38.9	26.4	22.0	11.5	4.95	2.41

Constant Power Discharge (Watts/cell) at 25 °C (77°F)

F.V/Time	15min	20min	30min	45min	1h	2h	3h	4h	5h	8h	10h	20h	48h	100h
1.85V/cell	426.8	358.2	281.3	224.7	183.0	119.7	90.6	74.4	63.1	44.4	38.1	20.3	9.16	4.51
1.80V/cell	466.8	388.2	298.9	235.7	191.3	126.4	95.0	77.6	65.9	46.4	39.7	20.9	9.28	4.59
1.75V/cell	511.5	421.2	318.9	250.7	205.4	131.9	100.0	80.8	68.2	47.7	40.5	21.3	9.41	4.62
1.70V/cell	551.1	456.6	348.4	260.8	216.2	138.7	104.6	84.1	70.9	49.5	41.8	21.7	9.51	4.68
1.65V/cell	581.4	480.1	365.5	275.7	222.9	143.1	108.2	86.8	73.2	50.7	42.7	22.2	9.67	4.74
1.60V/cell	624.3	513.7	384.2	283.0	229.6	147.9	111.1	89.1	75.4	51.9	43.5	22.7	9.83	4.78

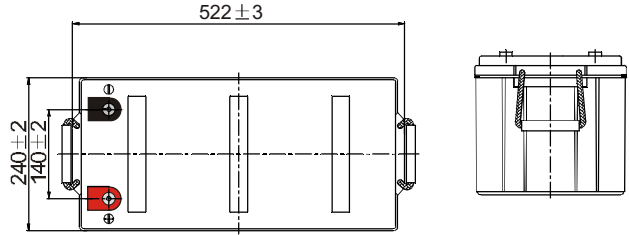
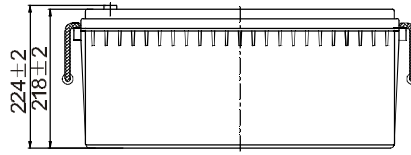
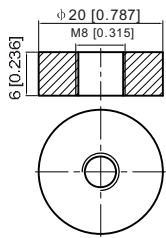
Specifications subject to change without notice.



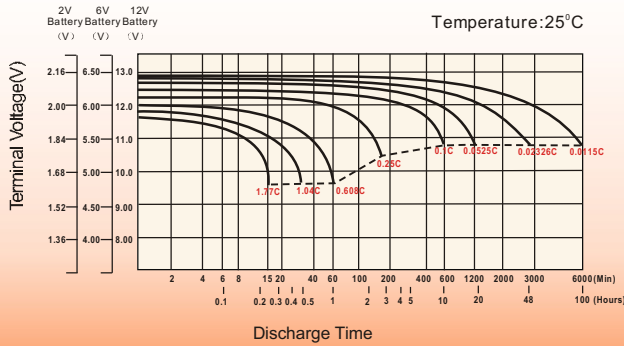
Dimensions

T11 Terminal

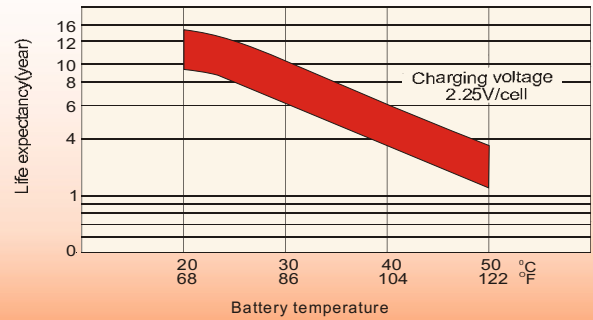
Unit: mm [inches]



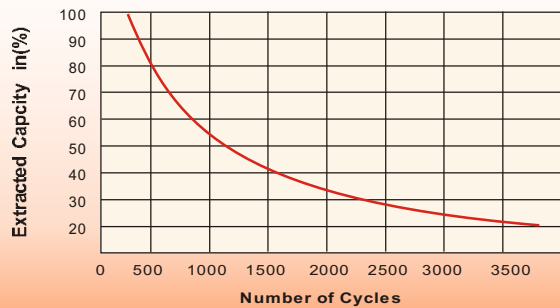
Discharge Characteristics



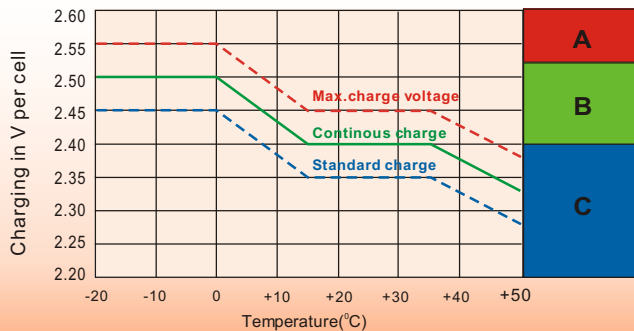
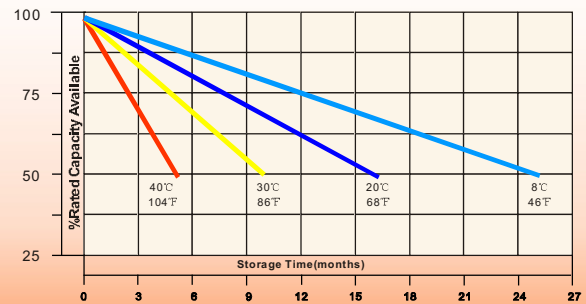
Effect of Temperature on Long Term Float Life



Cycle Service Life



Self-Discharge at Different Temperatures



Charge Mode

- A** With switch regulator (two-step controller) charge on curve max.charge voltage for max.2 hrs/day then switch over to continuous charge
- B** Standard charge without switching
- C** Boost charge (Equalizing charge with external generator) charge on curve continuous charge for max. 5 hrs/month, then switch over to curve Standard charge

Sales Office

China sales office:

Add: 5th Floor, Xinbaohui Bldg., Nanshai Blvd.,
Nanshan, Shenzhen, China. 518052
Tel: +86-755-86036060 (100 lines)
Fax: +86-755-26067269
E-mail: export@leoch.com
Http://www.leoch.com

HongKong sales office:

Add: Workshop C, 33/F, TML Tower,
No. 3 Hoi Shing Road, Tsuen Wan,
New Territories, Hong Kong
Tel: +852 35786666
Fax: +852 21170016
E-mail: sales.hk@leoch.com

Singapore sales office:

Add: No. 1 Tech Park Crescent,
Singapore 638131
Tel: +65 68416629
Fax: +65 68443210
Email: sales.sg@leoch.com

North America sales office:

Add: 19751 Descartes, Unit A,
Foothill Ranch, CA 92610, USA
Tel: 949-588-5853
Fax: 949-588-5966
E-mail: sales@leoch.us
Http://www.leoch.com

Europe sales office:

Add: 9B Wheatstone Court, Waterwells
Business Park, Gloucester, GL2-2AQ,
UK United Kingdom
Tel: +44(0) 1452 729428 / 1452 729696
Fax: +44 (0)1452-690125
E-mail: Sales.Europe@leoch.com